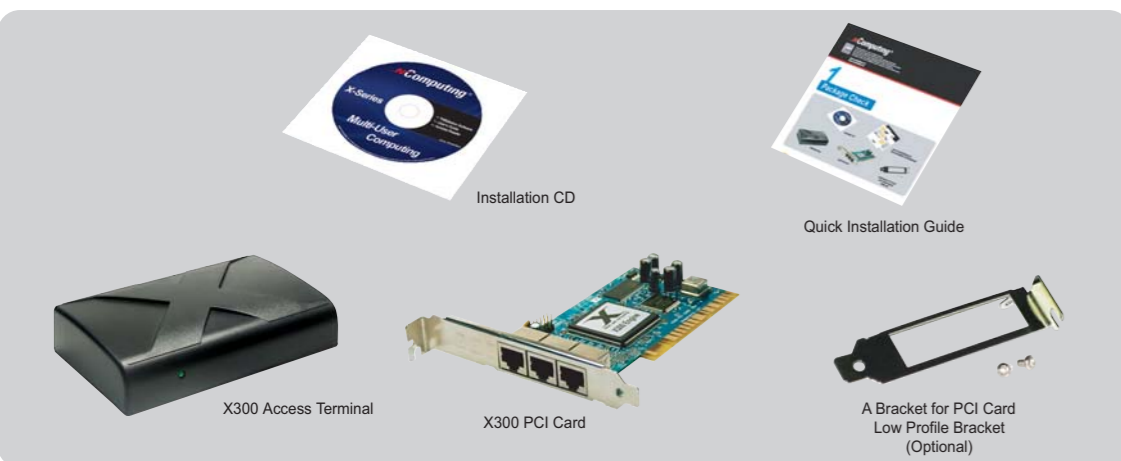


# X300

## Quick Installation Guide

To ensure that you are using the Hardware and the Software of X300 have to be installed in your Host PC. For the installation of the X300, please follow this quick install guide.

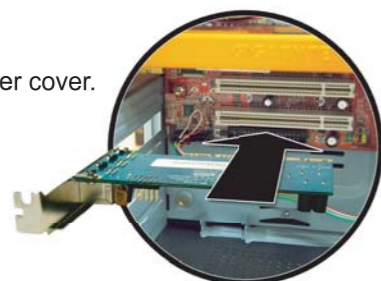
# 1 Package Check



# 2 Installing Hardware

## 1 Install the X300 PCI card in the Host PC

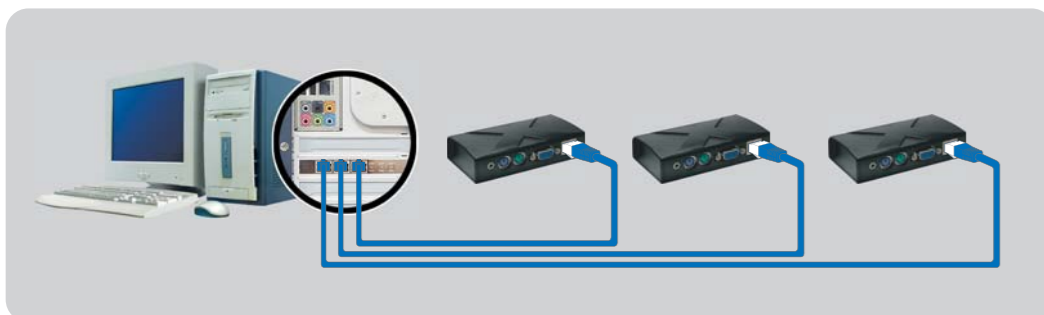
- step 1** Turn off the computer and then remove the computer cover.
- step 2** Insert the X300 PCI card and tighten the screw.
- step 3** Replace the computer cover.



## 2 Connect the PCI card to a access terminal a LAN cable

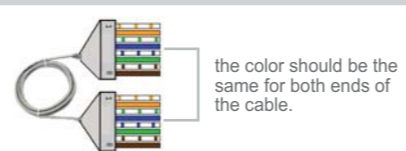
The use of a 16ft.(5m) or longer common \*LAN cable for the connection may affect the picture quality of the monitor which is connected to the access terminal. The use of Category 6 type LAN cable, which has a high class specification, is recommended in order to achieve the best picture quality of each access terminal.

\*LAN cable in this guide means CAT5e cable or CAT6 cable.

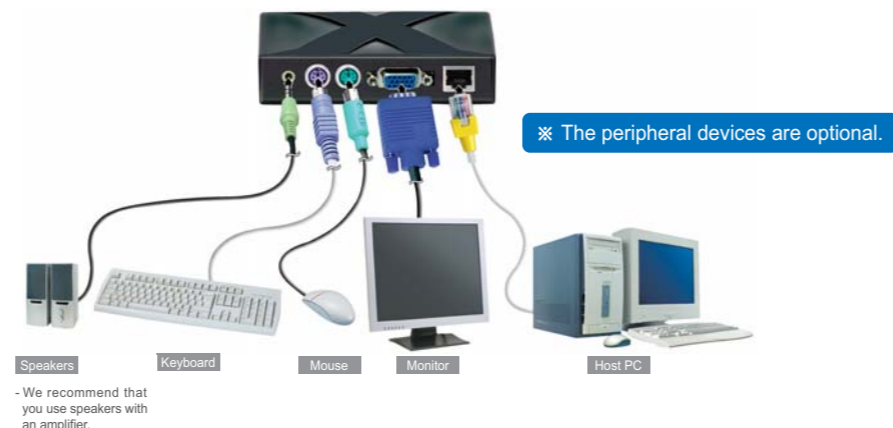


## WARNING

- ▶ Please use the Direct LAN cable\*
- ▶ Please do not connect to any network devices.



## 3 Connect peripheral devices to each access terminal.



After finishing installing the X300 hardware, see the back of this guide in order to install the X300 software.

# 3 Installing Software

## 4 X300 driver installation

- step 1** Installation of X300 Bus Enumerator
- step 2** Installation of Graphic Controller for Port 1 of PCI card
- step 3** Installation of Graphic Controller for Port 2 of PCI card.
- step 4** Installation of Graphic Controller for Port 3 of PCI card.

## 5 X300 application program installation

Type the serial number and the activation key for every X300 access terminal.

## 6 Registration of the X300 via the Internet

We recommend to register now to get the latest costfree update.

[Back Page](#)

# X300 Remote Management Console Installation

Please make sure that the host computer and the access terminal are connected correctly before installing the drivers.

## WARNING

The peripheral device must be connected to the PCI card and the access terminal before installing the driver and application program. Both the hardware and software must be installed to achieve normal operation of the X300 product.

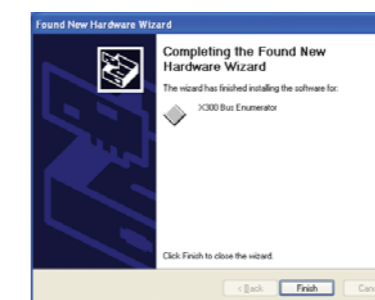
## Installation of a X300 PCI card driver

### 1 When the computer starts the "Hardware Update Wizard" window.



### 2 Insert the "Software Installation CD" into the CD-ROM drive and then install the PCI card driver.

### 3 Select "Finish" to complete the Bus Enumerator installation.



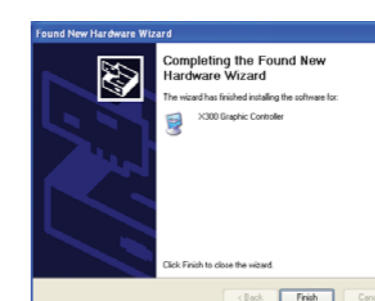
## Installation of a X300 Graphic Controller

### 1 After installing X300 Bus Enumerator, the "Found New Hardware Wizard" screen will be displayed.



### 2 Install X300 Graphic Controller.

### 3 Click the <Finish>button to complete the graphic controller driver installation.



## WARNING

All 3 ports on the PCI card will be installed separately. Therefore you will be prompted to install these drivers 3 times back to back.

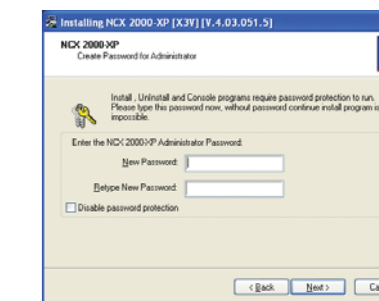
## Installation of X300 Remote Management console

### 1 After installing the PCI card drivers please execute the Install.exe file which is located in the CD-ROM drive.

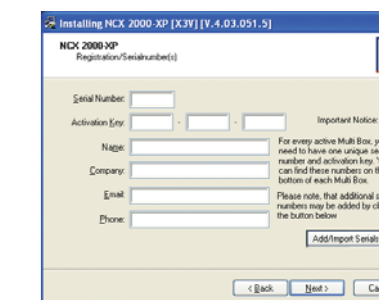


### 2 Please click on the "Install Program" button.

### 3 Please input the password, which is designed to prevent the unauthorized access to the NCX-2000-XP remote management console program.



### 4 For the registration of the X300 please input the serial number and the activation key written on the back of the access terminal.



### 5 You will now be prompted to restart your computer. Please select "Yes, I want to restart my computer now" if you wish to do so. Please note that the installation will not be complete until your computer has been restarted.



## The operating Environment of the Computer.

Operating systems supported by the X300 PCI card are as follows

- Windows
- Linux

Operating system support may change without prior notice. Please see our website for the latest operating system support information.

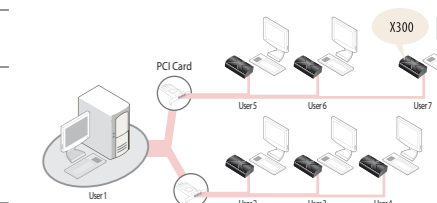
### Screen Resolutions Supported

Resolution 1024 x 768 / 16 bit colors / Refresh rate 60 Hz  
Resolution 800 x 600 / 16 bit colors / Refresh rate 75 Hz

### Recommended Specification for Using the X300 PCI card and the access terminal

1 X300 PCI card	2 X300 PCI card
- CPU : Intel Pentium 4 1.3 ~ 2.4GHz with HT*	- CPU : Intel Pentium 4 2.4 ~ 3.8GHz with HT*
- Main Memory : 512Mbytes or more	- Main Memory : 512Mbytes or more

\*HT : Intel® Hyper-Threading Technology



## NOTICE

The contents may vary depending on the specification of the products and may change without advance notice.