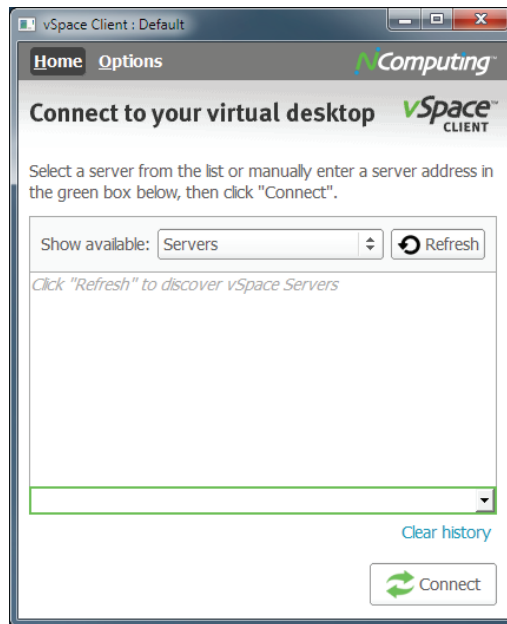




## vSpace Client



## User Manual

[www.ncomputing.com](http://www.ncomputing.com)

## Table of Contents

Important Notices .....	
Product Overview .....	
System Requirements .....	
Installation .....	
Installing vSpace Client .....	
Launching vSpace Client.....	
Registration and Licensing .....	
Registering vSpace Server .....	
Installing vSpace Client Access License Keys.....	
Connect to your virtual desktop .....	
Server Discovery Options .....	
Server History .....	
Connect .....	
Session Dropdown Menu .....	
Summary Tab .....	
Profile Summary.....	
Global Summary.....	
Server Connection Tab.....	
Host server connection .....	
Audio / Video options Tab .....	
Video options .....	
Audio options .....	
Auto-Login options Tab.....	
Use desktop login credentials .....	
Kiosk startup mode Tab .....	
Program / application details.....	
Host server groups Tab .....	
Host server groups .....	
Profile settings Tab .....	
vSpace Client name and configuration .....	
Master password Tab.....	
Use password protection .....	
Support and Additional Resources .....	
NComputing Technical Support .....	
Additional Microsoft Licensing Information .....	
Disclaimers and Legal Information.....	

## Important Notices

Please note that reproduction of this User Manual in whole or in part, without express written permission from NComputing, is not permitted.

NComputing reserves the right to make improvements and/or changes to this User Manual and to the products, programs and/or specifications described herein at any time without notice. Information contained in this document may have been obtained from internal testing or from a third party. NComputing shall not be liable for any direct, indirect, special, incidental or consequential damages in connection with the use of this material. The latest version of this User Manual can be downloaded from the "Documentation" page in the Support section of the NComputing website at: [www.ncomputing.com](http://www.ncomputing.com)

Please refer to the End User License Agreement (EULA) and Terms of Use (TOU) that are presented for your review during the installation of both the vSpace Server and vSpace Client. The information contained in these documents is very important. The EULA and TOU constitute agreements between you and NComputing and are accepted by you by installing and using the product. It is your responsibility to print a copy of the EULA and TOU in order to keep for your records. The EULAs are also available for download online at [www.ncomputing.com/documentation](http://www.ncomputing.com/documentation)

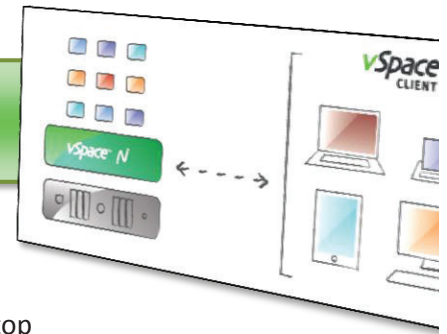
This product gives users shared access to computer resources. It may not support all software applications, especially high-resolution graphics applications or 3D games that are designed to be supported by stand-alone computers. Similarly, it may not support all hardware peripherals that are designed to be supported by stand-alone computers.

Refer to your computer operating system and application software vendors' license agreements for information on using these products with NComputing systems. Additional software licenses may be required.

. For information on licensing vSpace Client and vSpace Server with Microsoft operating systems see: [www.ncomputing.com/mslicensing](http://www.ncomputing.com/mslicensing)

The NComputing software products described in this user manual are protected by numerous granted and pending U.S. and international patents.

## Product Overview



vSpace Client for Windows is a software client that enables a user to securely access their centrally managed virtual desktop and applications hosted on a vSpace Server. vSpace Client expands access options beyond NComputing client devices to include Windows-based laptops, netbooks and re-purposed desktop PCs. It also enables high-performance, low cost and easy to manage access for Bring Your Own Device (BYOD) environments.

Some examples of how you can use vSpace Client in your environment include:

- Enable older PCs to access newer operating systems and applications hosted on a vSpace server
- Enable any PC to access an single application hosted on a vSpace Server (Kiosk mode)
- Make it easy to manage PCs brought by employees or contractors to work. Manage only the central vSpace-based desktops that are kept separate from the users' local PC desktops
- Enable employees or students to access vSpace sessions hosted at work/school from home
- Provide mobile access to vSpace from Windows-based netbooks and laptops
- Use vSpace Client to remotely access and manage vSpace Servers

Note that while NComputing L-series devices connect to one vSpace session at a time, PCs running vSpace Client can connect to more than one session and more than one vSpace host at the same time. vSpace Client supports keyboard, mouse, display, and audio in/out redirection from the PC to the vSpace host. USB devices connected to the client computer (such as a disk-on-key) remain available to the local client computer only and are NOT redirected to the vSpace virtual desktop session.

## System Requirements

vSpace Client is only supported by servers running vSpace Server 6.6.2.3 or newer (you cannot connect vSpace Client to host servers running vSpace 4 or 5). For installation of vSpace Server refer to the NComputing L-series User Manual. For Microsoft OS licensing information, see [www.ncomputing.com/mslicensing](http://www.ncomputing.com/mslicensing).

For each vSpace Client, you will need:

- A Windows-compatible PC or notebook/netbook with keyboard and mouse
- Display with a minimum resolution of 800x600
- A category 5/6 network cable to connect the client computer to your existing Ethernet network
- Optional: speakers, headphones and microphones

## Installation

vSpace Client requires two separate software components to function. An instance of vSpace Server 6 on a suitable host system, and an instance of vSpace Client installed on the desired client PC.

### Installing vSpace Client

To begin, download the latest revision of vSpace Client by opening the following URL in your internet browser:

<http://www.ncomputing.com/softwaredownload>

From the software download page, select vSpace Client from the product drop-down and your desired operating system. The download page will include two software components: the vSpace Client software for the OS you selected as well as the vSpace Server software. Remember that you will need a properly configured and registered vSpace Server to connect to. If this is your first time using vSpace Server or you simply require additional information on the subject, please visit the NComputing Support page for access to product documentation and our Knowledge Base at [www.ncomputing.com/support](http://www.ncomputing.com/support)

A detailed product manual for vSpace Server and its associated Management Console can be found

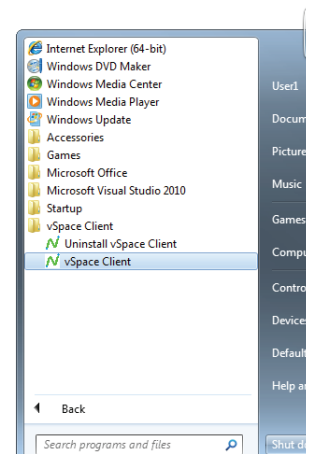
<http://www.ncomputing.com/documentation> (Select "L-series User Guide") and

[http://www.ncomputing.com/kb/Ncomputing-vSpace-Management-Console-Guide\\_312.html](http://www.ncomputing.com/kb/Ncomputing-vSpace-Management-Console-Guide_312.html).

Once you have acquired the vSpace Client installation software, run the install executable and proceed through the install process as directed by the installation wizard.

### Launching vSpace Client

At the end of the vSpace Client installation process you can choose to have it automatically launch after installation or you can manually launch it by clicking the Windows Start Button and navigating to the NComputing vSpace Client Folder where you will find the vSpace Client program.



## Registration and Licensing

Registration and licensing for vSpace Client are managed from the server. If you already have a vSpace Server 6 host installed and registered, you need only add vSpace Client Access Licenses to the host to complete the setup process.

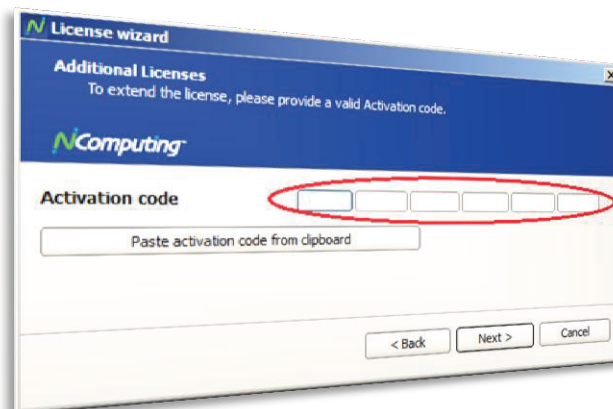
### Registering vSpace Server

If you have not yet completed the registration process on your host system, do so at this time. You can run the NComputing Registration wizard from the host by pressing the Windows Start Button and navigating to the NComputing vSpace folder.

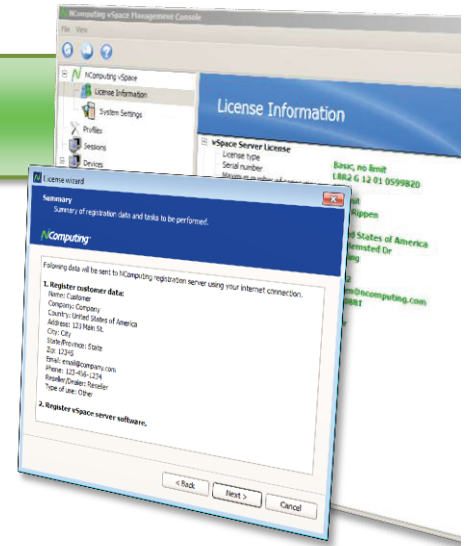
If the vSpace host does not have an active internet connection, you may select the “Offline” register method, which will generate a TXT file that you can then email as an attachment to [registration@ncomputing.com](mailto:registration@ncomputing.com). The offline registration process is automated and will respond with activation file which you can import by once again launching the Registration Wizard and selecting “Continue Offline Registration.”

### Installing vSpace Client Access License Keys

From your vSpace Server, open the NComputing vSpace folder from the Windows Start Menu and select vSpace Registration. From the registration wizard select “Get Additional Licenses.” You will be prompted for a license key, as seen below. Enter your vSpace Client Access License key and select “Next” to proceed. You can view the number of installed vSpace Client licenses on the vSpace Server by opening the “License Information” section of the Management Console. Note that by default a single trial-vSpace Client Access License is included with the vSpace Server installation.



**NOTE:** You can add additional vSpace Client Access Licenses to your server(s) by repeating these steps at any time.

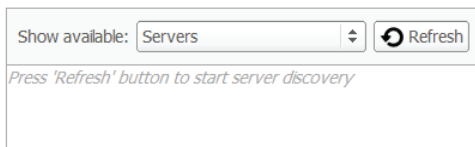
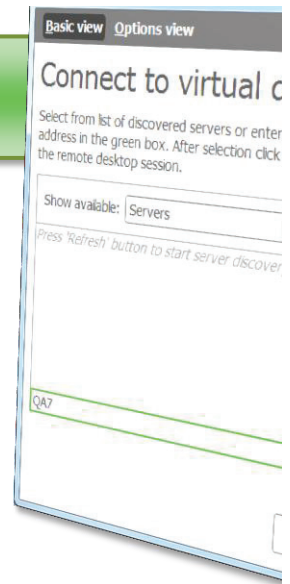


Home view

## Connect to your virtual desktop

The default interface displayed when vSpace Client is launched is the “Home,” view which can be used to quickly connect to a server of your choice and includes options for server discovery, a server history list, and a connect button.

For advanced configuration options, click on “Options ” in the top left of the vSpace Client Window.



## Server Discovery Options

The server list includes three discovery modes. These modes are a follows:

- Servers
- Server Groups
- Servers and Server Groups

Select “Servers” to show individual servers available to the client. “Server Groups” to populate the server list with predefined group servers. You can also opt to show individual servers AND server gr simultaneously.


[Clear history](#)

## Server History

A dropdown menu beneath the server list keeps track of servers tl have recently been used. This drop down can be used to quickly re to commonly used servers. To clear this list, press the “Clear histo button beneath the drop down.



## Connect

Once a server or server group has been selected, press the Conne button to start a session.



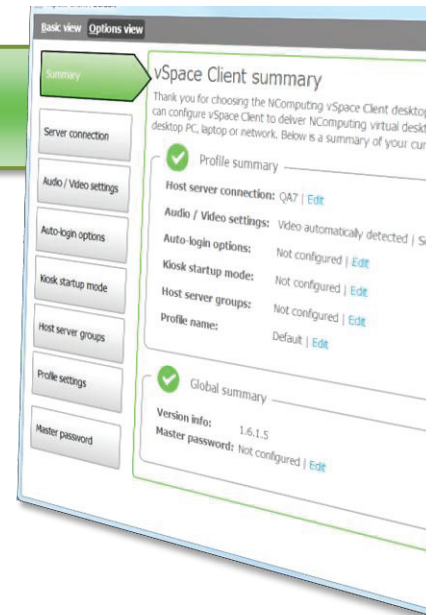
## Session Dropdown Menu

While connected to a session, you can display the Session Dropdo Menu by moving your mouse to the top center of the vSpace Clie window. From this menu you can switch between Full Screen and Windowed mode, disconnect from your current vSpace Client sess and show or hide the dropdown menu itself.

Options view

## Summary Tab

The Summary tab provides a summary of vSpace Client's current configuration status. You can alter any of these settings by using the configuration tabs along the left side of the screen, or by clicking the [Edit] link next to any item in the Profile or Global summary sections.



### ✓ Profile Summary

The Profile Summary section of this screen provides an at-a-glance indication of the configuration status of vSpace Client and its core components. These include:

- Host server connection
- Audio / Video settings
- Auto-login options
- Kiosk startup mode
- Host server groups
- Profile name

Any components that have not yet been configured or that are in their default state will be labeled such.

### ✓ Global Summary

The Global Summary section provides information on attributes that apply to all connections, regardless of profile settings or other configuration decisions. These include:

- Version info
- Master password



Options view

## Server Connection Tab

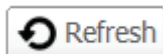
The Server Connection tab provides a list of servers detected by vSpace Client using your current discovery settings and allows you to select a server to connect to. From this tab you may also enable or disable automatic connection and WAN optimization.



## Host server connection

The Host server connection section allows you to designate how vSpace Client will discover potential vSpace hosts. Select “Servers” to auto-discover hosts within the client’s network environment. Select “Server Groups” to populate the server list with predefined groups of servers. Select “Servers and Groups” to show individual servers AND server groups simultaneously.

**NOTE:** To configure Server Groups, click the “Host Server Groups” tab along the left side of the window.



The “Refresh” button can be used to check for newly discoverable servers.

## Automatically connect on vSpace client application start

Enabling this setting will cause vSpace Client to automatically connect to a host (chosen by the client) on launch. This will bypass the server selection process.

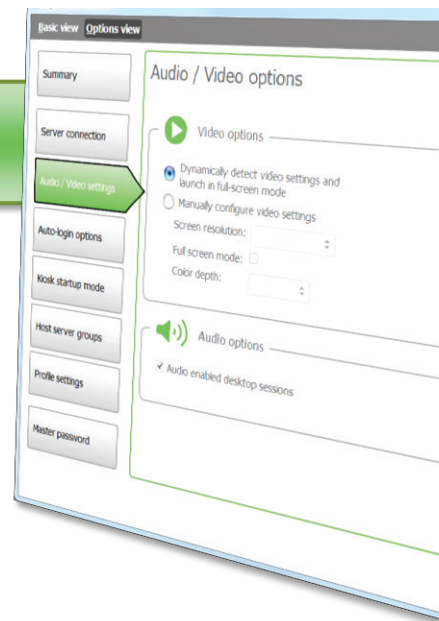
## Optimize connection for WAN network

With this setting enabled, vSpace Client will send less mouse data to the vSpace Server to reduce network traffic when you are connecting via a WAN connection. Be sure to also configure your vSpace Server’s Performance Profiles to optimize for a low-speed network connection.

Options view

## Audio / Video options Tab

The Audio / Video options tab allows you to configure vSpace Client's video and audio settings. These settings affect only the audio and video quality of the desktop session running within vSpace Client.



### Video options

The Video options section allows you to configure the display settings used by vSpace Client. While these settings are independent of the client device's display settings, they should not exceed client device's capabilities.

#### Dynamically detect video settings and launch in full screen mode

This setting instructs vSpace Client to adopt the video settings being used by the system or which it is being run.

#### Manually configure video settings

This setting allows you to specify your video settings.

- **Screen resolution** – Select your preferred resolution.
- **Full screen mode** – Click to enable full screen mode.
- **Color depth** – Select your preferred color depth.



### Audio options

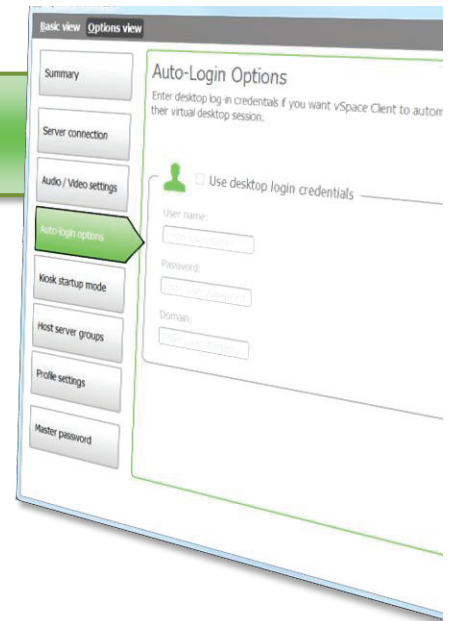
#### Audio enabled desktop sessions

This setting enables or disables audio within the vSpace Client session.

Options view

## Auto-Login options Tab

As with all NComputing client devices, vSpace Client allows you to automatically log in to a Windows session using predefined user account information. By enabling this feature, you will bypass the Windows Logon screen and proceed directly into a session.



## Use desktop login credentials

Enabling the “User desktop login credentials” feature instructs vSpace Client to automatically log in Windows upon connection.

### User Name

Specify the User Name of the account to be used.

### Password

Enter the password of the account being used.

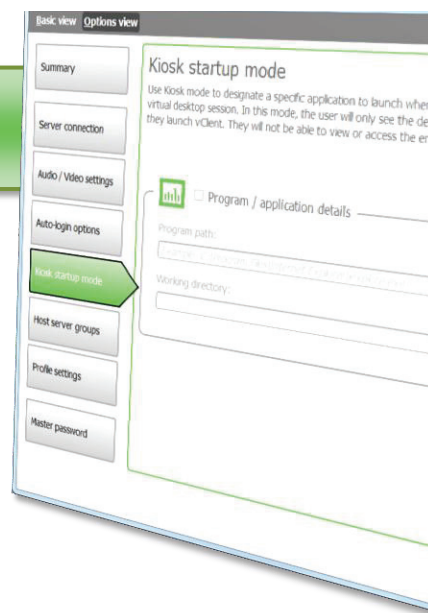
### Domain

Specify the domain for domain accounts. This is not required for local user accounts.

Options view

## Kiosk startup mode Tab

vSpace Client can be configured to launch a specific application rather than proceeding to a standard desktop session. The Kiosk startup mode tab allows you to enable this feature (known as Kiosk mode) as well as provide directory and path information for the application you wish to launch.



## Program / application details

By checking the box next to this feature, you instruct vSpace Client to launch a designated application executable, or other file rather than presenting the user with a desktop environment. When the application is closed the user is logged out of the session.

### Program path

Provide the full path of the program or file you wish to launch.

(ie: C:\Program Files\Internet Explorer\iexplore.exe)

### Working directory

Provide the directory path of the program or file you wish to launch.

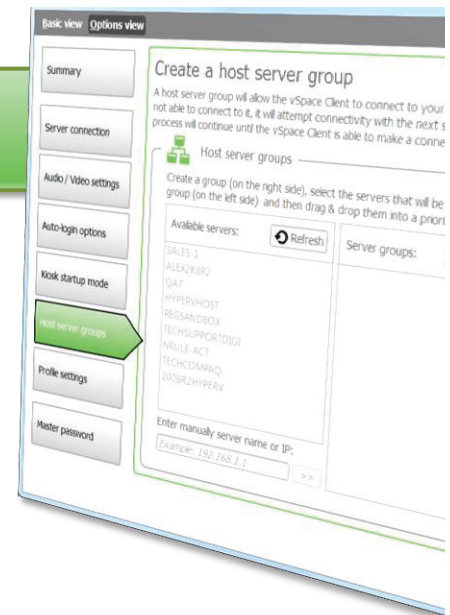
(ie: C:\Program Files\Internet Explorer\)

Note that while entering Kiosk mode prevents certain desktop services from being launched, Kiosk is not intended to completely lock users out of the system. If you wish to place restrictions on what of the desktop or operating system a user can access, you'll need to make use of the operating system security settings and/or additional third party software designed specifically to restrict user access.

Options view

## Host server groups Tab

The Host server groups tab allows you to designate preconfigured server groups. This feature can allow you to create a measure of failover functionality or simply keep servers organized when operating in an environment that is home to several vSpace hosts.

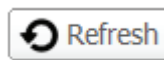


## Host server groups

When connecting to a server group, vSpace Client will attempt to connect to the first available server listed in the server group. If the first server is not available, the next server in the group will be tried and so on.

### Available servers

The Available servers section displays all current visible servers.



The “Refresh” button can be used to check for newly discoverable servers.

### Server groups

The Server groups section allows you to select a server group to work with, or create a new server group.



The “+ New group” button can be used to create a new server group which be given a custom name upon creation.

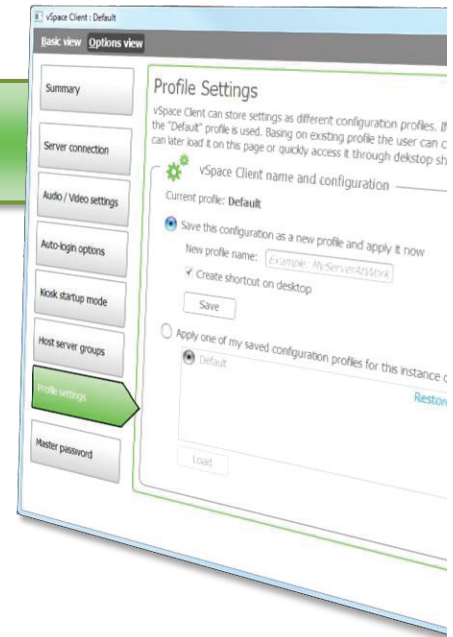
### Enter manually server name or IP

If you wish, you can specify a server manually by entering the host’s IP address or host name

Options view

## Profile settings Tab

Administrators can save their vSpace Client configuration settings by using profiles. These profiles can then be used to save different configurations (for example, for connecting to different servers) on the same PC.



## vSpace Client name and configuration

To save a profile, enter the desired profile name in the text field next to “New profile name.” You n then save the profile and, if desired, create a desktop shortcut for it. Alternatively, you can apply a previously saved profile.

### Save this configuration as a new profile and apply it now

This option saves the currently loaded profile and applies all changes that may recently have been made.

### Apply one of my saved configuration profiles for this instance of vSpace Client

This option allows you to select a previously saved profile and apply it to the current vSpace Client settings.

Options view

## Master password Tab

The Master password tab allows you to secure your vSpace Client settings and prevent unauthorized changes from being made.



## Use password protection

Enabling this feature will prompt users for a password when they attempt to make alterations to v! Client settings. It is strongly recommended that administrators secure their vSpace installations to prevent unwanted or accidental changes from being made.

### Enter / Confirm password

Enter and confirm your desired password.

## Support and Additional Resources

### NComputing Technical Support

For additional technical documentation, solutions, and how-to's, visit

<http://www.ncomputing.com/kb>

To request Technical Support, please visit the NComputing Support page at

<http://www.ncomputing.com/support>

### Additional Microsoft Licensing Information

For additional information on Microsoft licensing and regulations, please visit the NComputing MS licensing page at

<http://www.ncomputing.com/mslicensing>



### Disclaimers and Legal Information

Information contained in this document may have been obtained from internal testing or from a third party. This information is for informational purposes only. Information may be changed or updated without notice. NComputing reserves the right to make improvements and/or changes in the products, programs and/or specifications described herein anytime without notice. All NComputing software is subject to NComputing intellectual property rights and may be used only in accordance to the NComputing End User Licensing agreement and Terms of Use.

[www.ncomputing.com](http://www.ncomputing.com)

©Copyright 2015 ZeroDesktop, Inc. All rights reserved. NComputing is the property of ZeroDesktop, Inc. Other trademarks and trade names are the property of their respective owners. Specifications are subject to change without notice. Performance may vary, depending on the configuration of the shared computer.