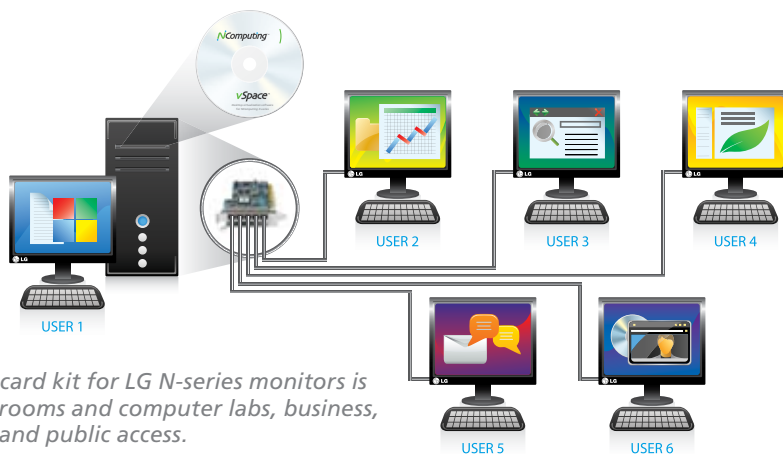


X550 PCI Card Kit for LG SmartVine Monitors

Key features & benefits

- Share one PC with eleven users using LG SmartVine monitors pre-integrated with NComputing X-series access device technology
- Slash hardware and maintenance costs up to 75%
- Easy to set up, maintain, and secure
- Compact and reliable (no fans or disks)
- Energy efficient
- Supports standard applications including multimedia and full-screen video
- Connect users directly to the shared PC using standard cables
- Includes powerful vSpace™ desktop virtualization software and PCI card for 5 users (additional PCI card may be added to PC for a total of 10+1 users)

Eleven users on one PC? Absolutely—today's PCs are so powerful that the vast majority of people use only a small fraction of their available computing power. The X550 taps the unused capacity so that up to eleven users can simultaneously share a single PC. Each user gets their own virtual workspace (applications, settings, files, and preferences), but at a fraction of what it would cost with individual computers. So even though eleven people share a single system, they each get their own rich PC experience.



The X550 PCI card kit for LG N-series monitors is ideal for classrooms and computer labs, business, government, and public access.

Convenient all-in-one design

LG SmartVine monitors are pre-integrated with NComputing X-series access device technology to eliminate extra connections and increase the speed of deployment of new desktops.

Easy to install

Each kit contains the powerful, award-winning vSpace™ desktop virtualization software and a PCI card. Setting it up is easy: just install the full-height PCI card and virtualization software on the shared PC. Then connect the LG SmartVine monitor to the PCI card with standard cables. Finally, connect each user's keyboard and mouse directly to the LG SmartVine monitor.

Powerful & flexible

Software applications run simultaneously and independently on each virtual desktop. Users don't even know they are sharing a PC! And your staff and users don't need special training. They will also love getting their desk space back—the LG SmartVine monitor is all you need. Just attach your keyboard and mouse to enjoy a rich Windows or Linux workspace. Users can even enjoy multimedia with stereo sound from the built-in speakers and full-motion, full-screen video.

Economical & efficient

With the NComputing X550, you can easily lower your hardware and support costs by up to 75%. You will also save money on electricity—the highly efficient X-series access device technology built into the LG SmartVine monitor adds only 1 watt per user (compared to 110 watts for a typical PC).

Connect up to six users to a single shared computer with one kit (or eleven with two kits)



Full-height X550 PCI card



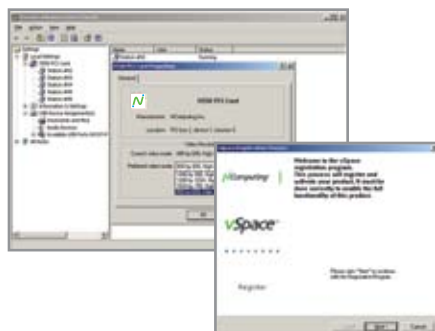
Plug keyboard and mouse directly into your LG SmartVine monitor



X550 PCI card with vSpace software



vSpace™ virtualization software



Specifications

Size	PCI card: full-height PCI plug-in card
Connection to shared PC	Standard Category 5e UTP (unshielded twisted pair) cable up to 5 meters / 16 feet Standard Category 6 STP (shielded twisted pair) cable up to 10 meters / 33 feet
Data security	No local data storage on LG SmartVine monitor USB ports on shared PC can be assigned to different users (Note: Local user access to USB ports may require separate USB extension cables – not included.)
Certifications	FCC Class B, CE, MIC, RoHS
Operating temperature and humidity range	0 to 40 degrees Celsius 10 to 85% relative humidity (non-condensing)
Supported operating systems*	Windows and Linux (refer to the support section of the NComputing website for the latest supported versions)
Maximum number of users per PC**	Each X550 kit adds five users to a shared PC. A maximum of two kits can be used with one PC to get a total of eleven users (five for each kit plus one on the PC).
PC configuration	See recommended product selection guide on the NComputing website
Supported software	Most PC applications*, including browsers, e-mail, office suites, media players, educational software and more. Supports multimedia and full-motion video, but is not recommended for intensive 3D software.
Kit contents	
X550 PCI card-only for LG N-series monitors	One X550 PCI card-only kit includes one full-height PCI card enabling 5 additional users, vSpace software installation CD with user's guide and Quick Install Guide. LG SmartVine monitor, shared PC, PS/2 keyboard, PS/2 mouse, speakers, Cat 5e/6 cables, and other peripherals are NOT included and must be purchased separately.

* Please refer to the Microsoft operating system licensing requirements and technical details at www.ncomputing.com/mslicensing. Specific Linux support information is available in the NComputing Knowledge Base.

**The number of users a PC will support depends on the host system capabilities as well as the applications used and performance expectations for those applications. It is recommended that new customers test their application(s) to establish an appropriate user-to-host ratio.



Linux® is the registered trademark of Linus Torvalds in the U.S. and other countries. Windows® is a registered trademark of Microsoft Corporation in the United States and other countries. Additional software licenses may be required by the software licensors. Please check your software user license agreements to ensure your continued compliance with such agreements.